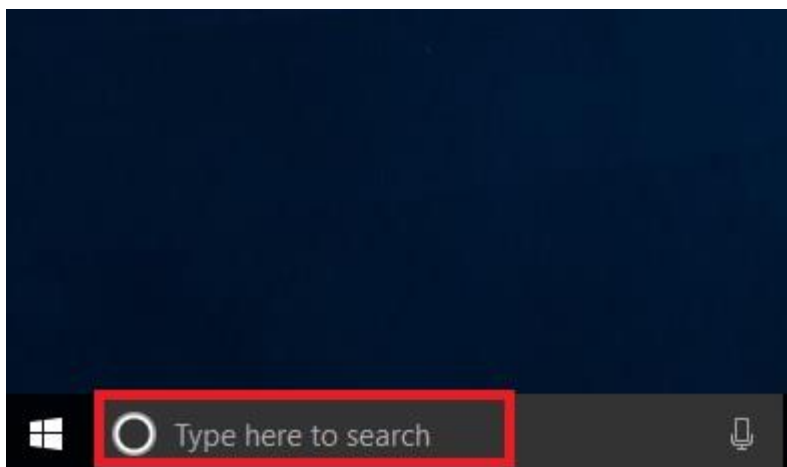


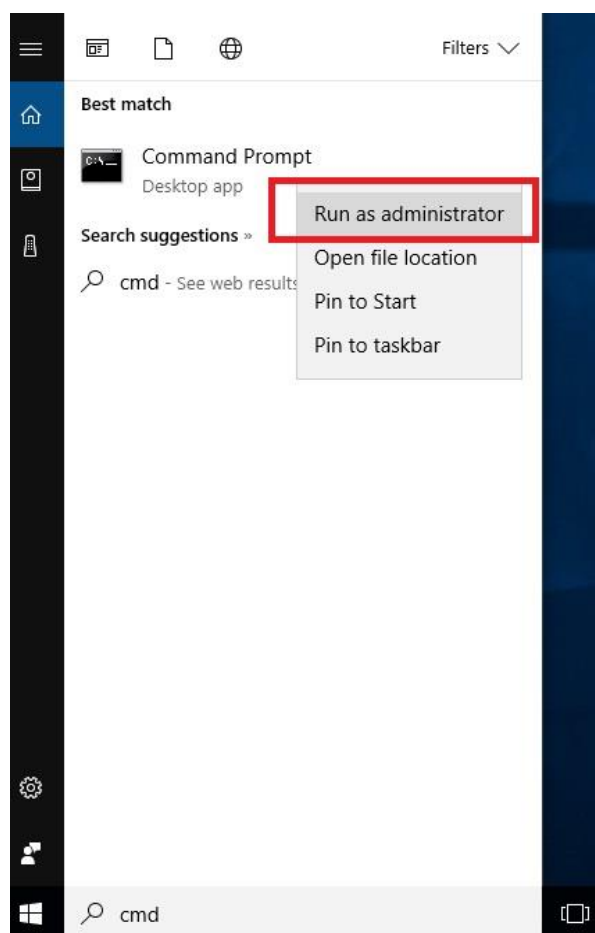
# Windows Flash Utility SOP

v1.5

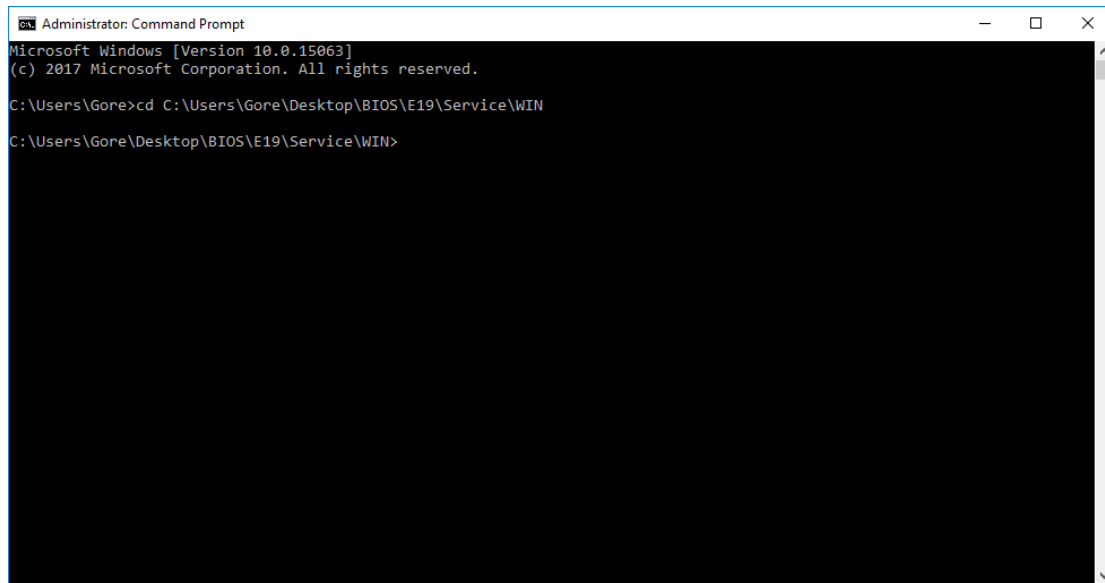
1. The lower left corner of the screen, scan windows.



2. Type CMD.
3. Mouse pointer Command Prompt, then click mouse right button.
4. Click mouse left button run "Run as Administrator".



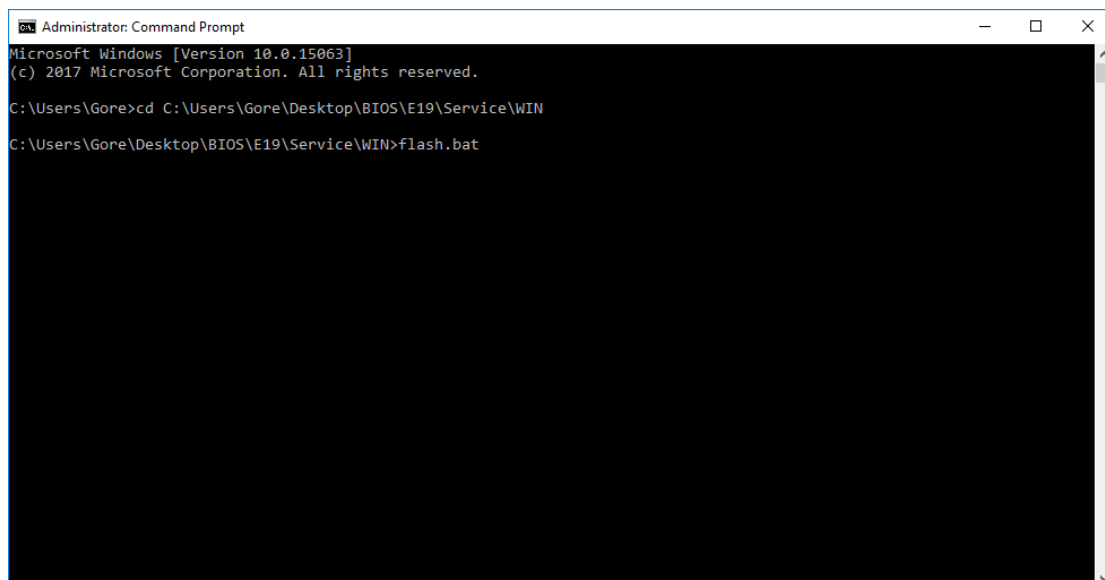
5. Use type “cd” “your package folder name” into WIN folder.



```
Administrator: Command Prompt
Microsoft Windows [Version 10.0.15063]
(c) 2017 Microsoft Corporation. All rights reserved.

C:\Users\Gore>cd C:\Users\Gore\Desktop\BIOS\E19\Service\WIN
C:\Users\Gore\Desktop\BIOS\E19\Service\WIN>
```

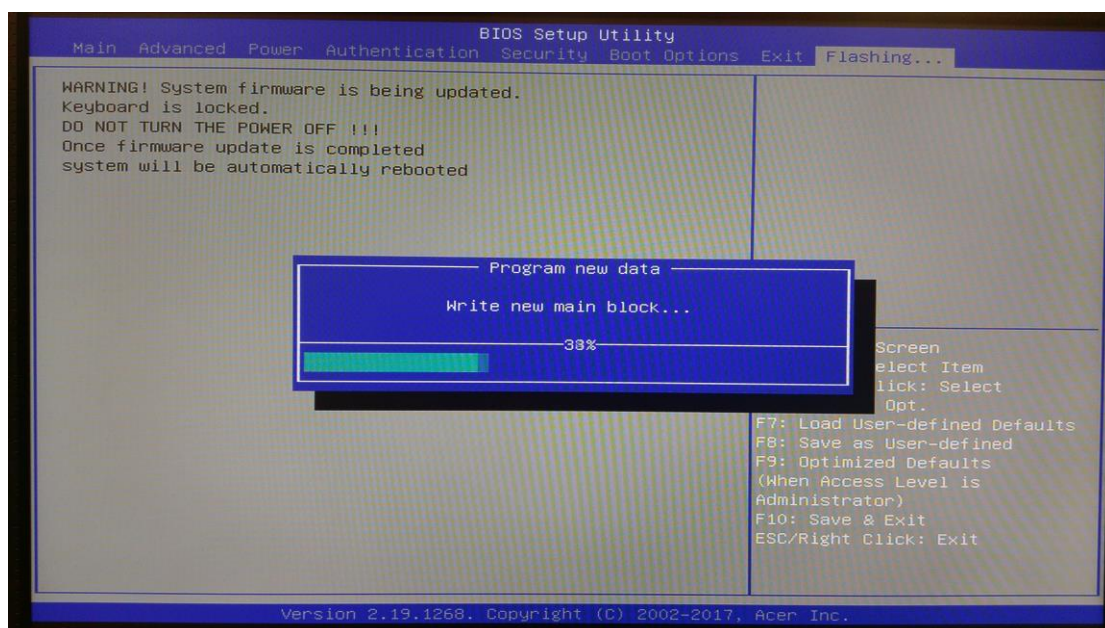
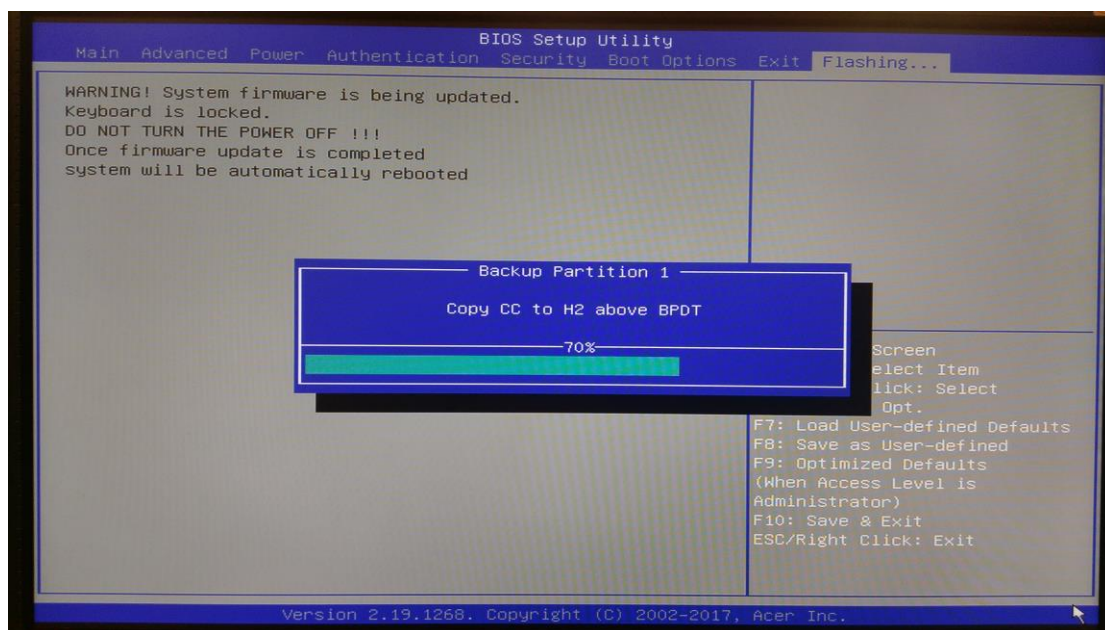
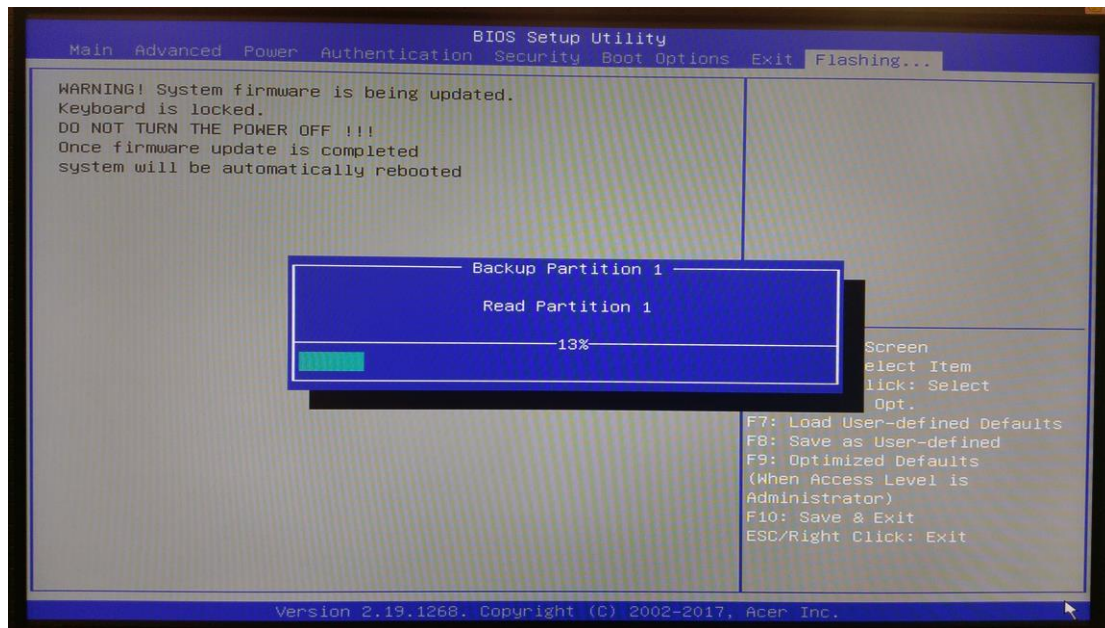
6. Type flash.bat, and use it to flash the ROM.



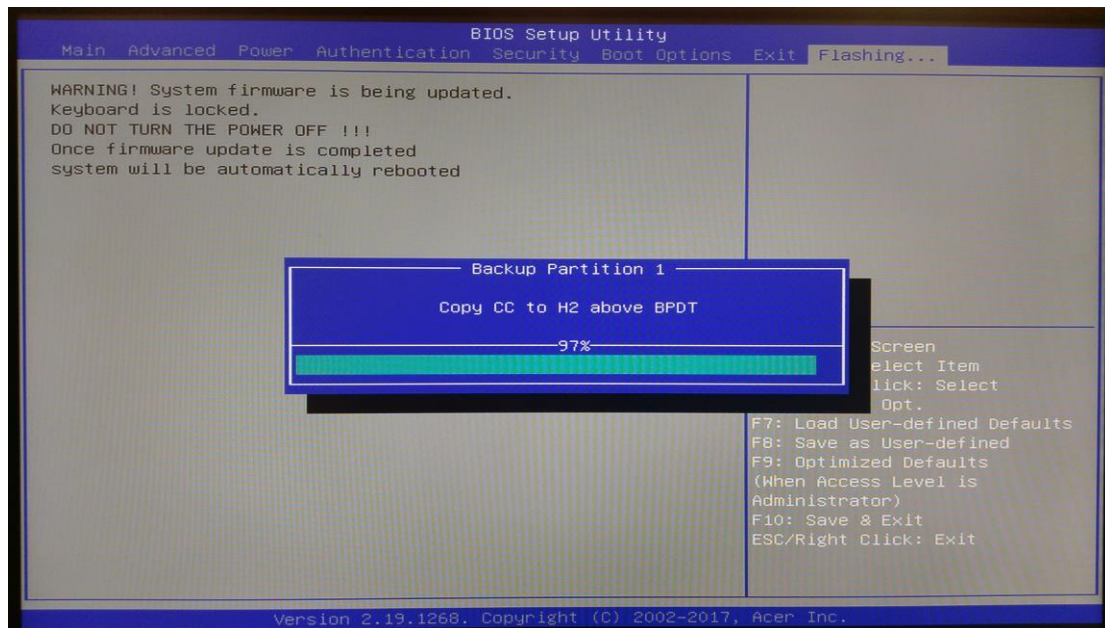
```
Administrator: Command Prompt
Microsoft Windows [Version 10.0.15063]
(c) 2017 Microsoft Corporation. All rights reserved.

C:\Users\Gore>cd C:\Users\Gore\Desktop\BIOS\E19\Service\WIN
C:\Users\Gore\Desktop\BIOS\E19\Service\WIN>flash.bat
```

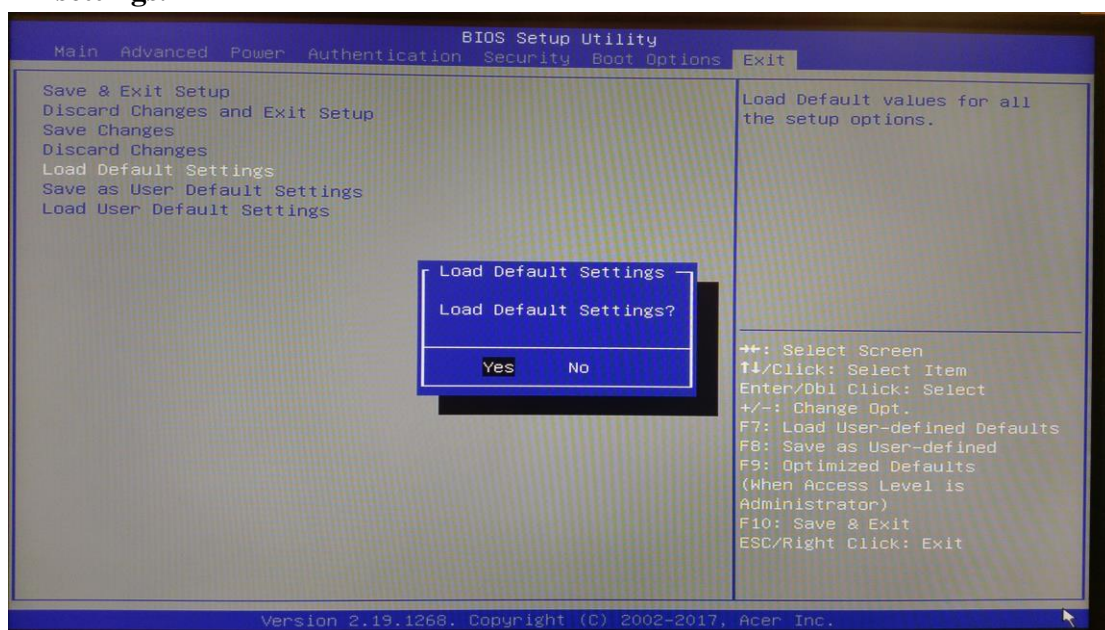
7. Wait Afuwin tools load BIOS, then press “Y” key to power off the system.  
If you set password in BIOS setup, it takes about 10~20 seconds to confirm that the password is correct.
8. System will auto power on into BIOS “Recovery” and proceed with flash update.







9. Wait it completed, system will reboot automatically. (Recovery completed).
10. Boot system. Please press “Delete” to enter BIOS Setup Menu.
11. Select “Load Default Setting” and press “Enter”. Select “Yes” to load default settings.



12. Select “Save & Exit Setup” and press “Enter”.
13. Select “Yes” to restart.

